

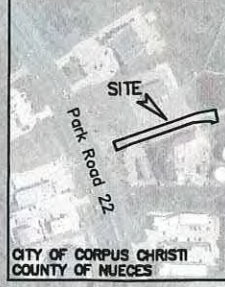
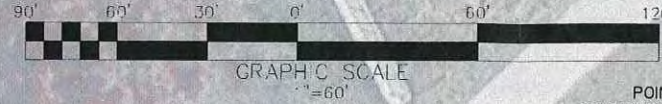
Lot 5, Block 4
Padre Island - Corpus Christi Section 18
Vol 57, Pg 105, M.R.N.C.T.
Owner: Nueces County Hospital District
(Per Appraisal District)

CURVE	DELTA ANGLE	RADIUS	ARC LENGTH	CHORD BEARING	CHORD LENGTH
C1	0°49'59"	2392.01'	34.78'	N22°23'52"W	34.78'
C2	5°21'58"	2392.01'	224.03'	N25°29'51"W	223.95'

LINE	BEARING	DISTANCE
L1	S68°14'00"W	22.40'
L2	N10°59'05"W	8.68'
L3	S10°59'05"E	45.00'

LEGEND:

- 5/8 INCH IRON ROD FOUND
- 3/4 INCH IRON PIPE FOUND
- ▲ MAG NAIL SET WITH WASHER STAMPED "URBAN ENGR CC TX"
- ▨ TEMPORARY CONSTRUCTION EASEMENT
- ▩ ASPHALT



Padre Island
Nueces County
Park No. 2
Owner: Nueces County
(Tax I.D. No.:6252-0000-0010)

Park Road 22
(200' Total Right-of-Way Drawing # 1035)
(Vol. 13, Pgs 1-8 M.R.N.C.T.)

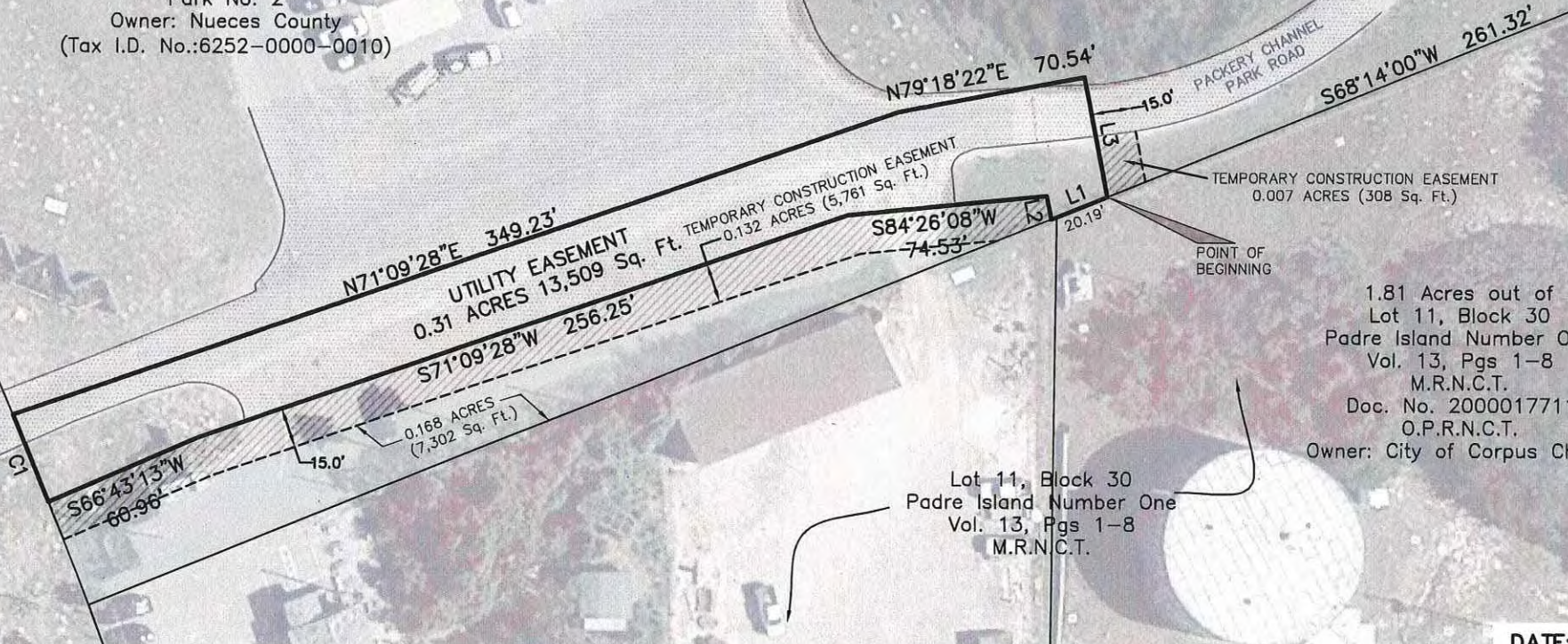


Exhibit B
Sketch to Accompany

FIELDNOTES for a 0.31 Acre Utility Easement, being out of Padre Island Nueces County Park No. 2 (Tax I.D. No.: 6252-0000-0010), over and across portions of Packery Channel Park Road.

DATE:
REV. D
SCALE
JOB N
SHEET
DRAWN
urbansu
©2018 b