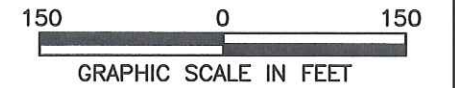







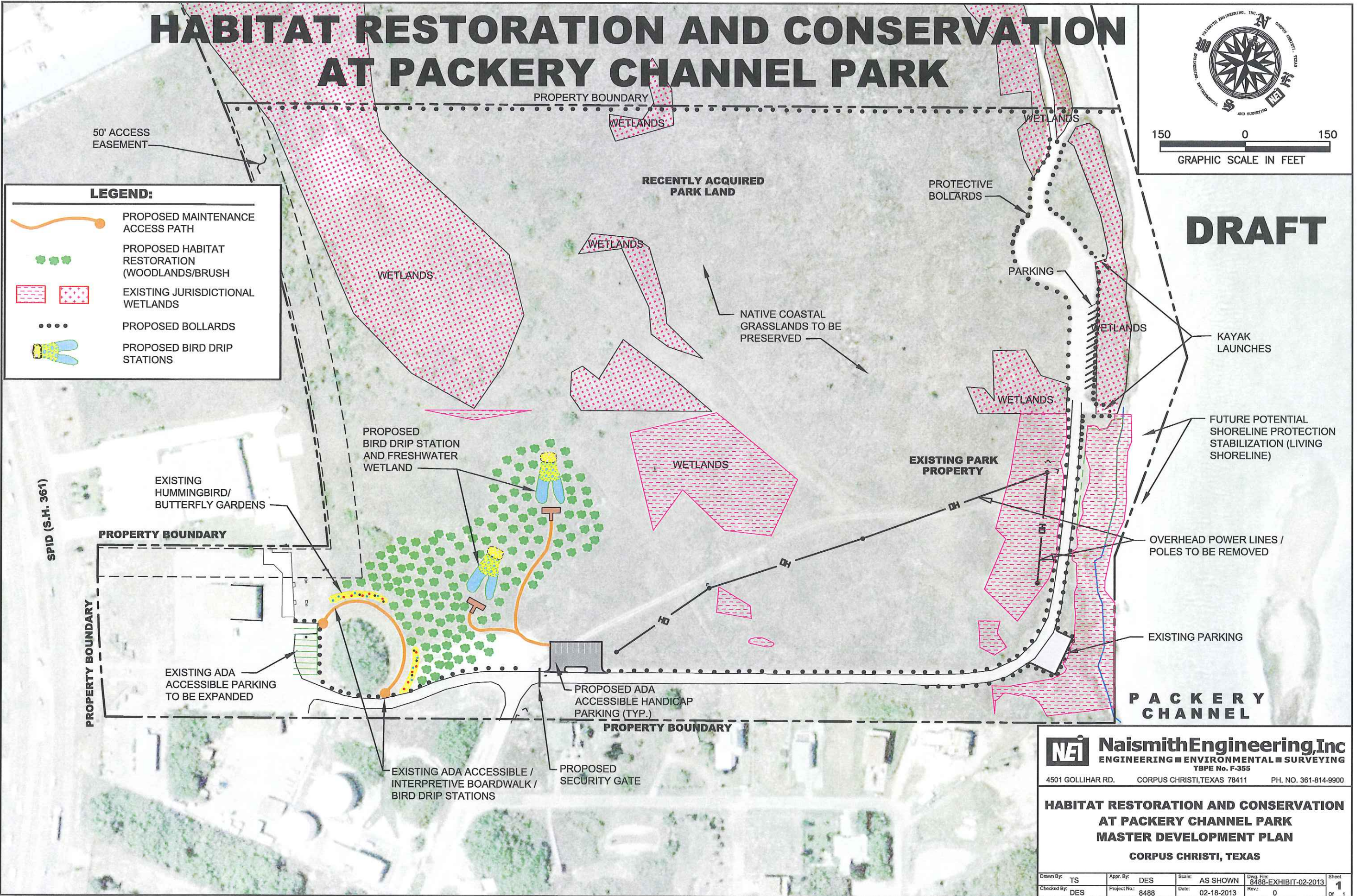
# HABITAT RESTORATION AND CONSERVATION AT PACKERY CHANNEL PARK



**DRAFT**

**LEGEND:**

-  PROPOSED MAINTENANCE ACCESS PATH
-  PROPOSED HABITAT RESTORATION (WOODLANDS/BRUSH)
-  EXISTING JURISDICTIONAL WETLANDS
-  PROPOSED BOLLARDS
-  PROPOSED BIRD DRIP STATIONS



X:\8488\Packery Exhibit\8488-EXHIBIT-02-2013.dwg

**NEI NaismithEngineering, Inc**  
 ENGINEERING ■ ENVIRONMENTAL ■ SURVEYING  
 TBPE No. F-355

4501 GOLLIHAR RD. CORPUS CHRISTI, TEXAS 78411 PH. NO. 361-814-9900

**HABITAT RESTORATION AND CONSERVATION AT PACKERY CHANNEL PARK MASTER DEVELOPMENT PLAN**  
 CORPUS CHRISTI, TEXAS

Drawn By: TS	Appr. By: DES	Scale: AS SHOWN	Dwg. File: 8488-EXHIBIT-02-2013	Sheet 1
Checked By: DES	Project No.: 8488	Date: 02-18-2013	Rev.: 0	of 1