

RESOLUTION NO. R20-109

A RESOLUTION OF THE COUNCIL OF THE CITY OF GLENDALE, MARICOPA COUNTY, ARIZONA, AUTHORIZING AND DIRECTING THE ENTERING INTO OF AN INTERGOVERNMENTAL AGREEMENT WITH MARICOPA COUNTY AND THE CITY OF SURPRISE FOR THE CONSTRUCTION, OPERATION AND MAINTENANCE OF THE TRAFFIC SIGNAL AT PEORIA AVENUE AND REEMS ROAD.

BE IT RESOLVED BY THE COUNCIL OF THE CITY OF GLENDALE as follows:

SECTION 1. That it is deemed in the best interest of the City of Glendale and the citizens thereof that the Intergovernmental Agreement with Maricopa County and the City of Surprise for the Construction, Operation and Maintenance of the Traffic Signal at Peoria Avenue and Reems Road, be entered into, which agreement is now on file in the office of the City Clerk of the City of Glendale.

SECTION 2. That the City Manager or designee and the City Clerk be authorized and directed to execute and deliver any and all documents necessary to effectuate said Agreement on behalf of the City of Glendale.

PASSED, ADOPTED AND APPROVED by the Mayor and Council of the City of Glendale, Maricopa County, Arizona, this 13th day of October, 2020.

Mayor Jerry P. Weiers

ATTEST:

Julie K. Bower, City Clerk (SEAL)

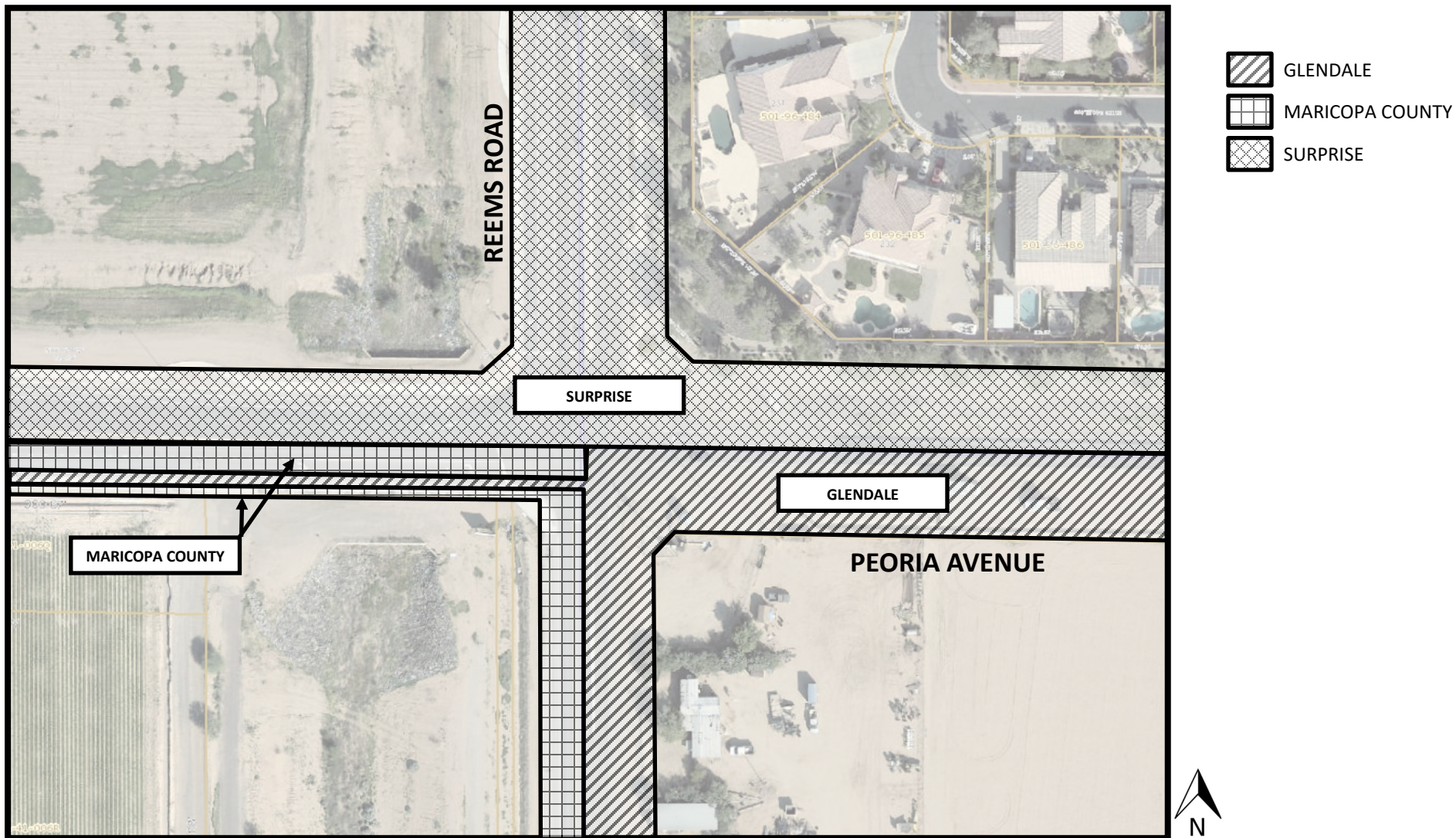
APPROVED AS TO FORM:

Michael D. Bailey, City Attorney

REVIEWED BY:

Kevin R. Phelps, City Manager

EXHIBIT A
AGENCY JURISDICTIONS



CITY OF SURPRISE

Project T2
Peoria Ave and Reems Rd
TRAFFIC SIGNAL IMPROVEMENTS



NO.	DESCRIPTION	QUANTITY	UNIT	PRICE	TOTAL PRICE
1	TRAFFIC SIGNAL 'A' POLE (10')	1	EACH	\$1,500.00	\$1,500.00
2	TRAFFIC SIGNAL 'J' POLE	0	EACH	\$6,500.00	\$0.00
3	TRAFFIC SIGNAL 'K' POLE	0	EACH	\$7,500.00	\$0.00
4	TRAFFIC SIGNAL 'R' POLE	3	EACH	\$9,000.00	\$27,000.00
5	TRAFFIC SIGNAL FOUNDATION FOR TYPE J, K, Q, OR R POLE	3	EACH	\$4,000.00	\$12,000.00
6	TRAFFIC SIGNAL FOUNDATION FOR TYPE 'A' POLE	1	EACH	\$600.00	\$600.00
7	25' SIGNAL MAST ARM	0	EACH	\$2,000.00	\$0.00
8	30' SIGNAL MAST ARM	0	EACH	\$2,500.00	\$0.00
9	35' SIGNAL MAST ARM	1	EACH	\$3,000.00	\$3,000.00
10	40' SIGNAL MAST ARM	0	EACH	\$3,500.00	\$0.00
11	45' SIGNAL MAST ARM	0	EACH	\$4,000.00	\$0.00
12	50' SIGNAL MAST ARM	3	EACH	\$4,500.00	\$13,500.00
13	55' SIGNAL MAST ARM	0	EACH	\$5,000.00	\$0.00
14	20' LUMINAIRE MAST ARM WITH 250W HPS LUMINAIRE	3	EACH	\$1,800.00	\$5,400.00
15	TYPE 'F' SIGNAL HEAD	8	EACH	\$600.00	\$4,800.00
16	TYPE 'G' SIGNAL HEAD	8	EACH	\$1,100.00	\$8,800.00
17	TYPE 'R' SIGNAL HEAD	0	EACH	\$600.00	\$0.00
18	PEDESTRIAN SIGNAL HEAD	8	EACH	\$600.00	\$4,800.00
19	VIDEO DETECTION CAMERA WITH ALL MOUNTING HARDWARE	4	EACH	\$8,000.00	\$32,000.00
20	EMERGENCY PREMPTION SENSOR	4	EACH	\$1,000.00	\$4,000.00
21	INTERNALLY ILLUMINATED STREET NAME SIGN	4	EACH	\$7,000.00	\$28,000.00
22	PEDESTRIAN PUSH BUTTON	8	EACH	\$400.00	\$3,200.00
23	TYPE II HEAD MOUNTING	4	EACH	\$150.00	\$600.00
24	ASTRO BRACKET MOUNTING	8	EACH	\$150.00	\$1,200.00
25	TYPE IV HEAD MOUNTING	1	EACH	\$300.00	\$300.00
26	TYPE V HEAD MOUNTING	5	EACH	\$350.00	\$1,750.00
27	TYPE VI HEAD MOUNTING	0	EACH	\$350.00	\$0.00
28	TYPE VII HEAD MOUNTING	3	EACH	\$350.00	\$1,050.00
29	TYPE VIII HEAD MOUNTING	0	EACH	\$375.00	\$0.00
30	#5 TRAFFIC SIGNAL PULL BOX	0	EACH	\$375.00	\$0.00
31	#7 TRAFFIC SIGNAL PULL BOX	2	EACH	\$600.00	\$1,200.00
32	#7 TRAFFIC SIGNAL PULL BOX WITH EXTENSION	0	EACH	\$650.00	\$0.00
33	2" SCH 40 PVC CONDUIT	50	L.F.	\$15.00	\$750.00
34	3" SCH 40 PVC CONDUIT	200	L.F.	\$18.00	\$3,600.00
35	REMOVE EXISTING EQUIPMENT AND DELIVER TO CITY OF SURPRISE YARD	0	LUMP SUM	\$4,300.00	\$0.00
36	TRAFFIC SIGNAL CONDUCTORS AND CABLES	1	LUMP SUM	\$12,000.00	\$12,000.00
37	CONTINGENCY	10	%	\$171,050.00	\$17,105.00
SUB-TOTAL:					\$188,155.00

38	EXISTING TRAFFIC SIGNAL 'Q' POLE	1	EACH	\$8,000.00	\$8,000.00
39	EXISTING TRAFFIC SIGNAL 'Q' POLE (SALVAGE)	1	EACH	\$8,000.00	\$8,000.00
40	EXISTING TRAFFIC SIGNAL FOUNDATION FOR TYPE J, K, Q, OR R POLE	1	EACH	\$4,000.00	\$4,000.00
41	EXISTING TRAFFIC SIGNAL CONTROLLER CABINET WITH ALL CONTROL MODULES	1	EACH	\$30,000.00	\$30,000.00
42	EXISTING UNINTERRUPTED POWER SUPPLY	1	EACH	\$5,000.00	\$5,000.00
43	EXISTING PEDESTAL MOUNTED METERED SERVICE ENCLOSURE	1	EACH	\$5,000.00	\$5,000.00
44	EXISTING CCTV CAMERA	1	EACH	\$5,000.00	\$5,000.00
45	EXISTING RADIO	1	EACH	\$4,900.00	\$4,900.00
46	EXISTING #7 TRAFFIC SIGNAL PULL BOX	3	EACH	\$600.00	\$1,800.00
47	EXISTING #7 TRAFFIC SIGNAL PULL BOX WITH EXTENSION	1	EACH	\$650.00	\$650.00
48	EXISTING #9 VAULT	1	EACH	\$2,500.00	\$2,500.00
49	EXISTING (2) 3" SCH 40 PVC CONDUIT	300	L.F.	\$20.00	\$6,000.00
50	EXISTING FIBER OPTIC CONDUIT	100	L.F.	\$18.00	\$1,800.00
SUB-TOTAL:					\$82,650.00
TOTAL:					\$270,805.00



Diego Ortiz