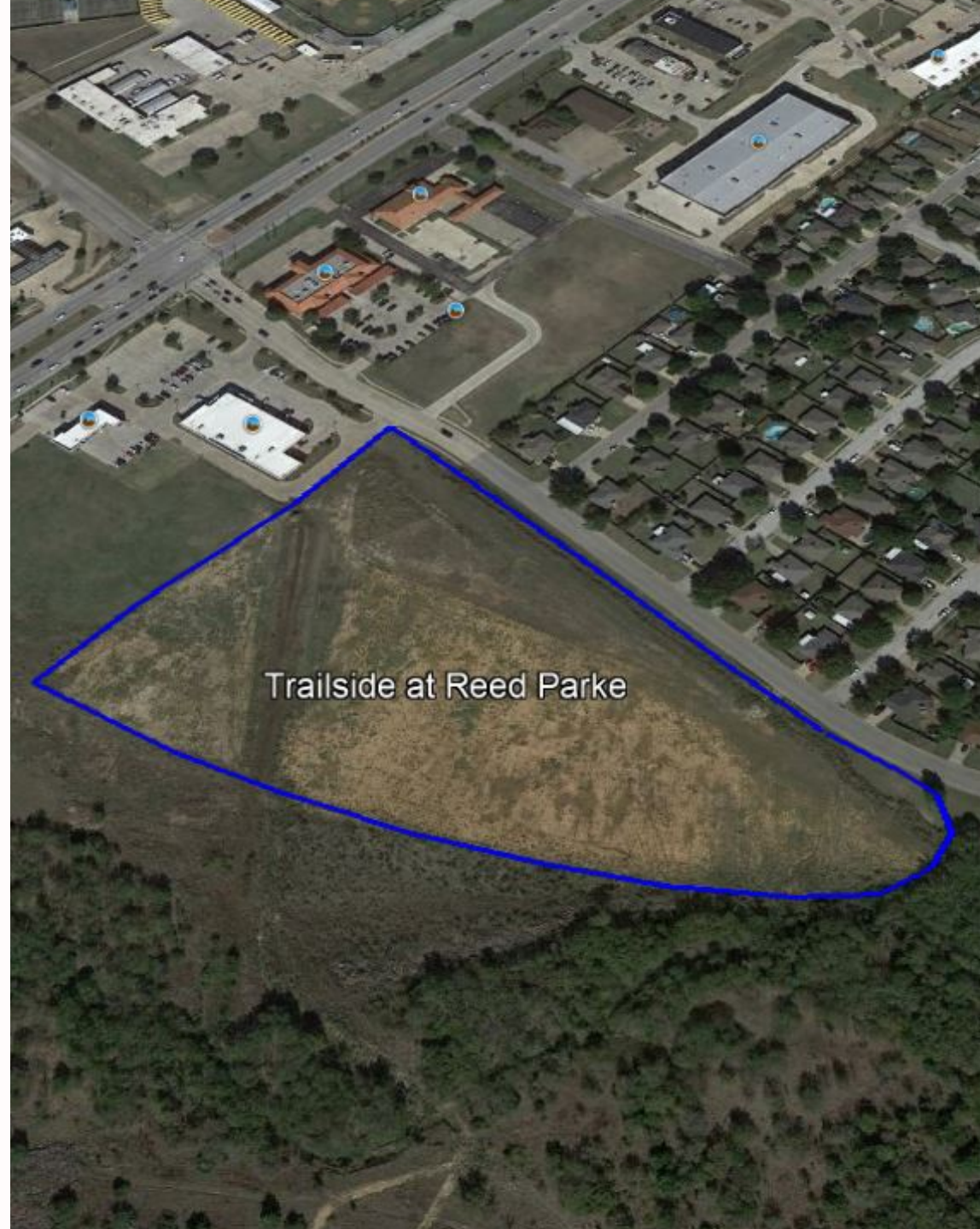


# CITY OF BURLESON

Permanent Public Utility Sewer Easement



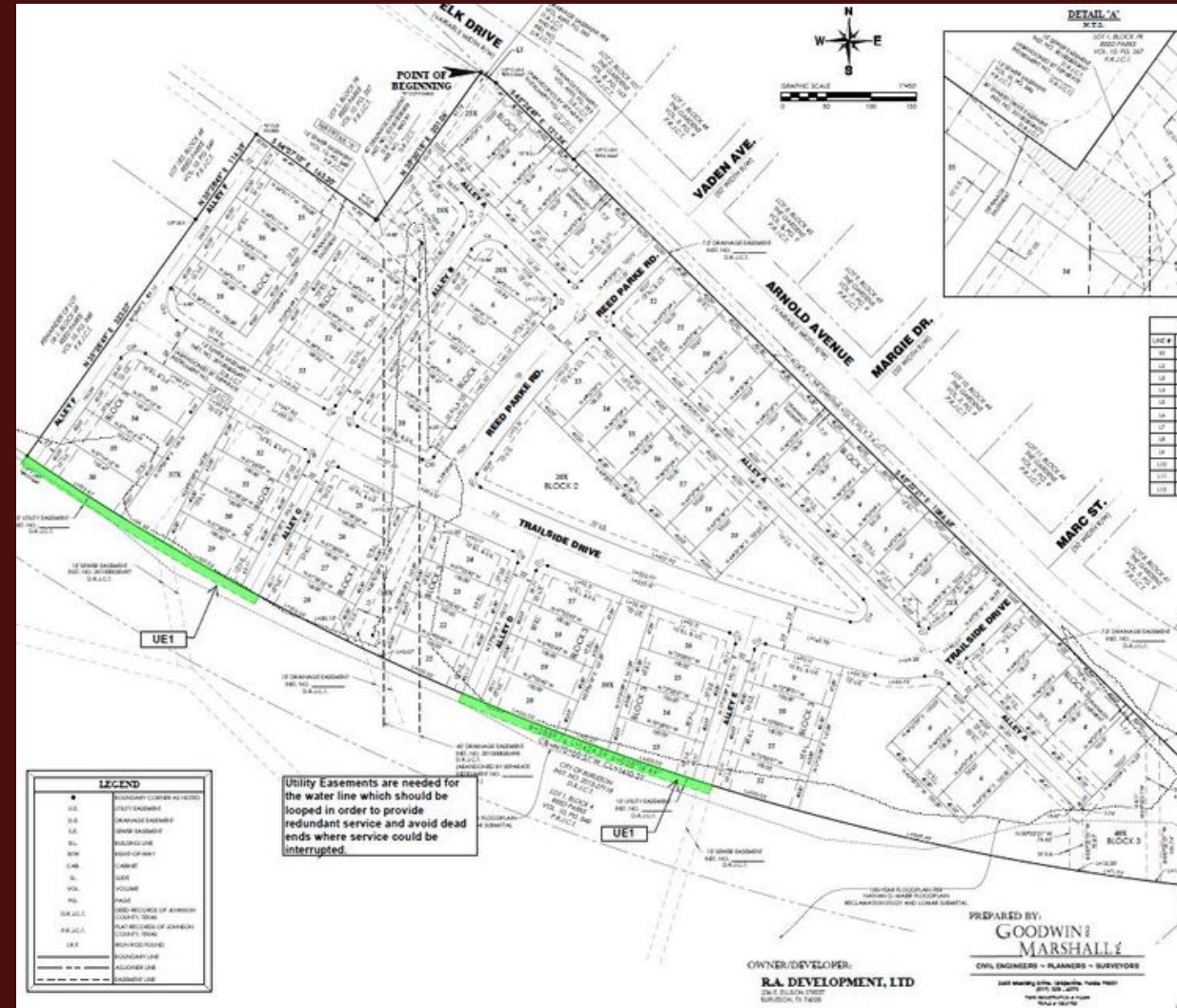




# UTILITY EASEMENT

## • EASEMENT REQUEST

- Water lines are required to be looped in order to provide redundant service and avoid dead end lines
- Staff requested utility easement in lieu of dedicated water to allow other utilities to be placed in same easement if needed to provide same looping opportunity
- Easement required on City owned park property to serve development
- Staff evaluated design - no negative impacts to park property or future Village Creek Trail identified



# OPTIONS



**CONSIDER APPROVAL OF  
A PERMANENT UTILITY  
EASEMENT TO THE CITY  
OF BURLESON  
ASSOCIATED WITH THE  
TRAILSIDE AT REED  
PARKE SINGLE-FAMILY  
RESIDENTIAL  
DEVELOPMENT LOCATED  
ON ARNOLD AVE. EAST  
OF THE INTERSECTION  
OF ELK DR. AND SW  
WILSHIRE BLVD.**



**DENY THE MINUTE  
ORDER**

